



BROOM STREET SOFTWARE

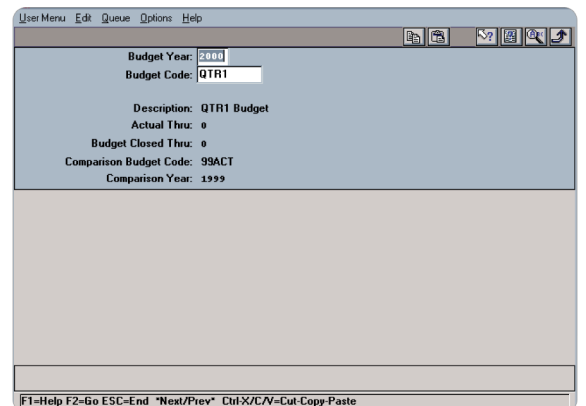
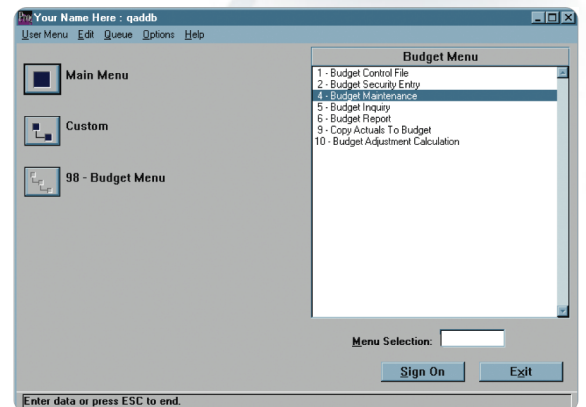
"Sweeping Away The Competition..."

White Paper on GL/Budget Module

This "BOLT-ON" Budget System works in conjunction with the standard QAD® Budget System. Key features include the following:

- Comparison's with Actual Amounts
- User-Defined Comparison Periods
- Comparison with Other Budget Codes
- Data Level Security by User ID
- Enhance Data Entry Screen,
- Drill Down to Period Entry
- Copy Actuals to Budgets
- Adjust Budgets at Top-Level by Percentages
- Enter Assumptions/Comments for Each Account
- Enhanced Budget Reporting

The first step is to define a budget code and fiscal year for which a budget is valid. This screen is a control screen showing how the budget entry will look for a particular budget code. A user can enter how to compare to actuals, and which budget code to compare against. These controls may be overridden during the budget entry process.



www.BroomStreet.com

This Screen allows the system administrator to set up data level security for users who are entering budgets. Security can be set up at the Cost Center, Account or Budget Levels. Flexibility is determined by how a user sets up security.

Budget Security Entry

User ID/Group:
Entity:

Cost Centers:
01002000

Accounts:
•

Budgets:
•

F1=Help F2=Go ESC=End *Next/Prev* Ctrl+X/C/V=Cut-Copy-Paste

This is the Budget Maintenance Screen. All Accounts for a particular budget appear showing the actuals through period 0 and the total budget remaining for the year. A variance is shown comparing the comparison budget to the actual's/budget combination. Totals are given for the whole cost center at the bottom of the screen. The capability exists to drill down to the budget values for each period and then to modify those budgets, which will roll up to the total.

Budget Maintenance

Year: 2000 Budget Code: QTR1 QTR1 Budget
Cost Ctr: 0100 Home Unit Sales Project: 99ACT Sub: 1999 Show Zero: yes
Entity: 1000 Comp Budget: 99ACT

Account	Budget Total	Actuals Thru 0	Remaining From 1	Comparison Budget	Variance	%
1040 - CASH	10	0	10	0	10	100.0
1041 - CASH - CANADIAN DOLLA	10	0	10	0	10	100.0
1042 - CASH - FRENCH FRANCS	0	0	0	0	0	0.0
1043 - CASH - SWISS FRANCS	10	0	10	0	10	100.0
1044 - CASH - NEW ZEALAND	0	0	0	0	0	0.0
Totals	30	0	30	0	30	100.0

The following screen depicts the drill down of the previous budget.

Budget Maintenance

Budget Year:
Budget Code:

Description: QTR1 Budget
Actual Thru:
Budget Closed Thru:
Comparison Budget Code: 99ACT
Comparison Year: 1999

F1=Help F2=Go ESC=End *Next/Prev* Ctrl+X/C/V=Cut-Copy-Paste